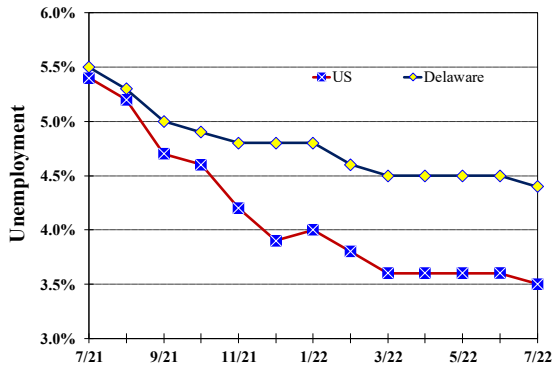


### Unemployment Rate

Delaware and US  
July 2021 - July 2022



### Monthly Commentary

Delaware continued its job growth trend in July, increasing by a net 11,800, or 2.6 percent, over July 2021 and by a net 1,900 jobs, or 0.4 percent, over June 2022. Year-to-date job growth has increased by a net total of 9,700 workers. *Leisure & Hospitality* again led July's growth, adding 7,800 jobs over-the-year prior, followed by the *Trade, Transportation and Utility and Manufacturing* sectors, which increased by a net 2,100 and 1,700 jobs since July 2021, respectively. The State's Labor Force Participation (LFP) rate declined 0.1 percentage point to 61.1 percent, its lowest level since November 2020.

### Delaware Civilian Labor Force

Delaware Residents

	July 2022	June 2022	July 2021
Civilian Labor Force	500,500	500,400	497,900
Employed	478,300	477,700	470,600
Unemployed	22,200	22,700	27,300
Unemployment Rate %	4.4	4.5	5.5
US Unemployment Rate %	3.5	3.6	5.4

Source: Delaware Dept. of Labor in cooperation with the US Dept. of Labor, Bureau of Labor Statistics.

### Area Unemployment Rates (%)

	July 2022	June 2022	July 2021
<b>New Castle County</b>	4.6	4.9	5.9
Wilmington	6.5	7.2	9.2
Newark	5.5	4.0	4.7
<b>Kent County</b>	5.6	6.0	7.3
Dover	7.4	7.9	9.9
<b>Sussex County</b>	3.8	4.0	4.6

Note: Area rates are not seasonally adjusted.  
Source: Delaware Dept. of Labor in cooperation with the US Dept. of Labor, Bureau of Labor Statistics.

### Hours & Earnings

All Employee (Total Private)

	July 2022	June 2022	July 2021
<b>Weekly Earnings</b>	\$967.51	\$958.09	\$943.57
<b>Weekly Hours</b>	33.1	32.8	32.9
<b>Hourly Earnings</b>	\$29.23	\$29.21	\$28.68

Source: Delaware Dept. of Labor in cooperation with the US Dept. of Labor, Bureau of Labor Statistics.

# Delaware Labor Force Trends

Delaware's seasonally adjusted unemployment rate in July 2022 was 4.4%, down from 4.5% in June 2022. There were 22,200 unemployed Delawareans in July 2022 compared to 27,300 in July 2021. The US unemployment rate was 3.5% in July 2022, down from 3.6% in June 2022. In July 2021, the US unemployment rate was 5.4%, while Delaware's rate was 5.5%.

In July 2022, seasonally adjusted nonfarm employment was 462,900, up from 461,000 in June 2022. Since July 2021, Delaware's total nonfarm jobs have increased by a net gain of 11,800, a rise of 2.6%. Nationally, jobs during that period increased 4.0%.

## Delaware Nonfarm Employment

Jobs at Delaware Locations  
Seasonally Adjusted (in 000s)

INDUSTRY GROUP	July 2022	June 2022	Over the Month Change	Over the Year Change†
TOTAL NONAG. EMP.	462.9	461.0	1.9	11.8
CONSTRUCTION	23.7	23.6	0.1	0.8
MANUFACTURING	26.4	26.4	0.0	1.7
Durable Goods	9.7	9.8	-0.1	0.7
Nondurable Goods	16.7	16.6	0.1	1.0
TRADE, TRANSP., & UTIL.	83.3	83.1	0.2	2.1
Wholesale Trade	11.6	11.6	0.0	0.4
Retail Trade	50.7	50.6	0.1	0.5
Transp. & Utilities	21.0	20.9	0.1	1.2
INFORMATION	3.7	3.7	0.0	-0.1
FINANCIAL ACTIVITIES	46.9	47.1	-0.2	-0.5
PROF. & BUS. SERVICES	64.9	64.6	0.3	1.4
EDUCATION & HEALTH	76.4	77.2	-0.8	-1.4
LEISURE & HOSPITALITY	52.4	50.8	1.6	7.8
OTHER SERVICES	18.6	18.2	0.4	0.4
GOVERNMENT	66.6	66.3	0.3	-0.4
Federal Government	6.1	5.9	0.2	0.3
State Government	32.1	32.1	0.0	-1.1
Local Government	28.4	28.3	0.1	0.4

† Annual changes are not seasonally adjusted.  
Details may not add up due to rounding and seasonal adjustment.  
Source: US Department of Labor, Bureau of Labor Statistics.

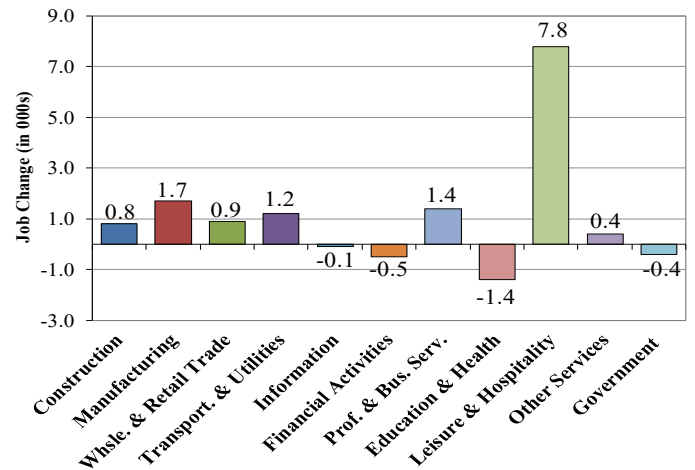
### Office of Occupational and Labor Market Information

For data questions, contact Tom Dougherty (302) 761-8062

<https://labor.delaware.gov/divisions/oolmi/>

## Delaware Over-the-Year Job Change

July 2021 – July 2022



## Consumer Price Index

All Urban Consumers

	Percent Change to July 2022 from:		
	July 2021	May 2022	June 2022
US City Average	8.5	1.4	0.0
Phila.-Camden-Wilm.*	NA	NA	NA

\* Data are published on a bi-monthly basis.

## Delaware Annual Net Job Change

Annual Average 2001–2021

